

Yukagen Elevator CAR LIFT

PRODUCT CATALOG



PT. KEN YUKAGEN INDONESIA

Jl Surya Nusa I, Kavling B23-B26,
Kawasan Industri Suryacipta, Kutamekar
Ciampel, Karawang, West Java 41361.



+62 821-1888-7009



sales@kenyukagen.com



www.kenyukagen.com

Car Lift



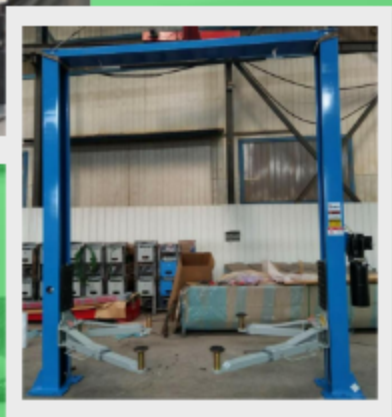
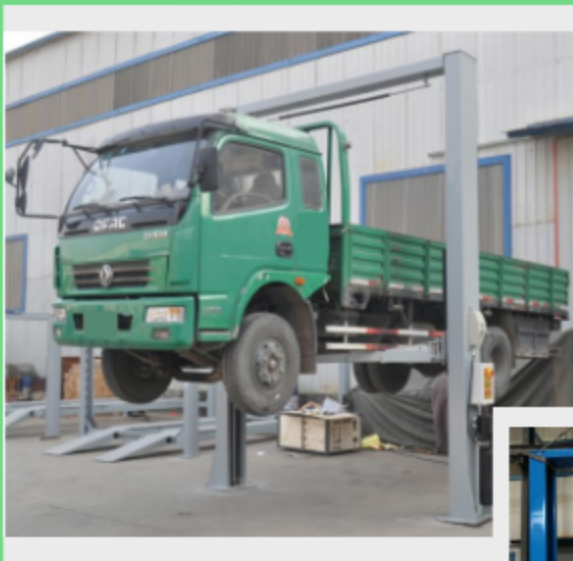
Floor Plate Car Lift

3500kg
(Manual Release)

4000kg
(Manual Release)

4000kg

Car Lift



Clear Floor Car Lift

3500kg

(Manual Release)

4000kg

(Manual Release)

4500kg

(Manual Release)

5000kg

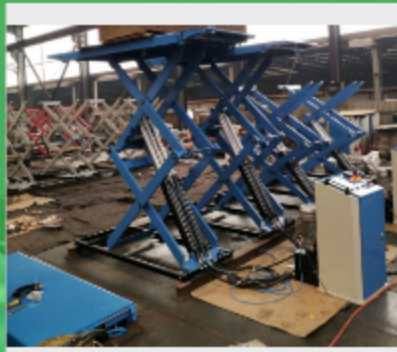


PT. KEN YUKAGEN INDONESIA

Scissor Lift



3500kg
In-ground



3000kg
Full Rise



3000kg
Mid Rise

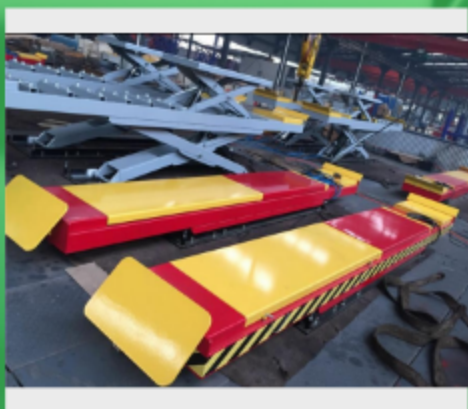


2700kg
Portable Scissor



PT. KEN YUKAGEN INDONESIA

Alignment Lift



3500kg
Alignment
scissor lift



3500kg
4 Post

4000kg
4 Post

5500kg
4 Post



PT. KEN YUKAGEN INDONESIA

Parking Lift



5500kg
4 Post Car Lift with Attaching Beam

List harga Yukagen Elevator Car Lift

No.	Produk	Harga
	Floor Plate Car Lift	
1	3.5T two post floor plate car lift	Rp 37,000,000
2	4T two post floor plate car lift	Rp 39,000,000
3	4T two post out lock floor plate car lift	Rp 40,000,000
	Clear Floor Car Lift	
1	3.5T two post clear floor car lift	Rp 41,000,000
2	4T clear floor car lift	Rp 43,000,000
3	4.5T clear floor car lift	Rp 45,000,000
4	5T clear floor car lift	Rp 48,000,000
	Scissor Lift	
1	3.5T in-ground scissor lift with extend platform	Rp 57,000,000
2	3T super-thin full rise scissor lift	Rp 68,000,000
3	3T super-thin mid rise scissor lift	Rp 44,000,000
4	2.7T Portable scissor car lift 1.2m lift	Rp 34,000,000
	Alignment Lift	
1	3.5T Alignment scissor lift	Rp 108,000,000
2	3.5T 4 post car lift for wheel alignment	Rp 72,000,000
3	4T 4 post car lift for wheel alignment	Rp 83,000,000
4	5.5T 4 post car lift for wheel alignment	Rp 121,000,000
	Parking Lift	
1	5.5T 4 Post Car Lift with Attaching Beam	Rp 67,000,000

Spesifikasi Car Lift

Workshop Lift

1. **3.5T two post floor plate car lift**
With manual release by two sides

- Harga Jual: **Rp 37,000,000**



-Model: SP-A3500

Load capacity:3500kg

Lift height:1750mm

Minimum height:110mm

Column height:2835mm

Column distance:3400mm

Installation width:3400mm

Lift time:50S

Down time:50S

Motor rate:2.2kw

Weight:542kg

Voltage:110V/220V/380V/415V,as requirements.

2. **4T two post floor plate car lift**
With manual release by two sides

- Harga Jual: **Rp 39,000,000**



Model: SP-B4000

Load capacity:4000kg

Lift height:1750mm

Minimum height:110mm

Column height:2830mm

Column distance:2800mm

Installation width:3450mm

Lift time:50S

Down time:50S

Motor rate:2.2kw

Weight:610kg

Voltage:110V/220V/380V/415V,as requirements.

3. **4T two post out lock floor plate car lift**

- Harga Jual: **Rp 40,000,000**



Model: SP-C4000

Load capacity:4000kg

Lift height:1750mm

Minimum height:110mm

Column height:2835mm

Column distance:2800mm

Installation width:3550mm

Lift time:60S

Downtime:50S

Motor rate:3.0kw Weight:616kg
Voltage:110V/220V/380V/415V,as
requirements.

4. **3.5T two post clear floor car lift**
With manual release by two sides

- Harga Jual: **Rp 41,000,000**



Model: SP-D3500

Load capacity:3500kg

Lift height:1750mm

Minimum height:110mm

Column height:2835mm

Column distance:2800mm

Installation width:3550mm

Lift time:60S

Downtime:50S

Motor rate:3.0kw

Weight:616kg
Voltage:110V/220V/380V/415V,as
requirements.

5. **4T clear floor car lift**

With manual release by two sides

- Harga Jual: **Rp 43,000,000**



Model: SP-E4000

Load capacity:4000kg

Lift height:1800mm

Minimum height:110mm

Column height:3630mm

Column distance:2800mm

Installation width:3450mm

Lift time & Down time:50S

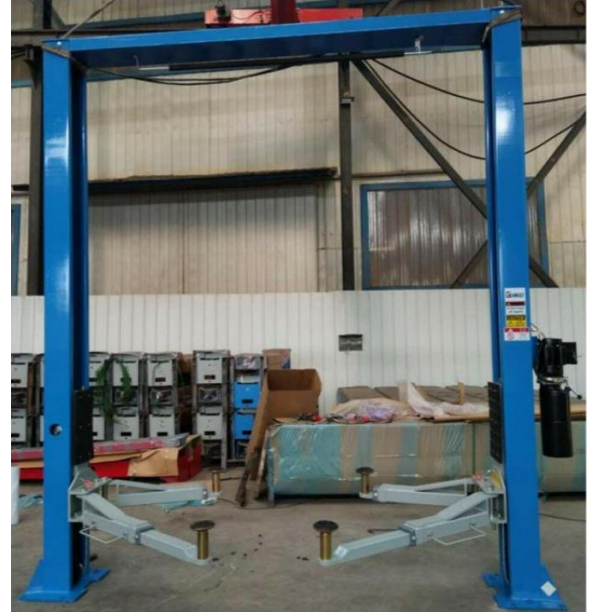
Motor rate:2.2kw

Weight:662kg

6. **4.5T clear floor car lift**

With manual release by one side

- Harga Jual: **Rp 45,000,000**



Model: SP-G4500

Load capacity:4500kg

Lift height:1800mm

Minimum height:110mm

Column height:3830mm

Column distance:2800mm

Installation width:3550mm

Lift time:50S

Down time:50S

Motor rate:3.0kw

Weight:680kg

Voltage:110V/220V/380V/415V,as requirements.

7. **5T clear floor car lift**

- Harga Jual: **Rp 48,000,000**



Model: SP-H5000

Load capacity:5000kg

Lift height:1900mm

Minimum height:110mm

Column height:4430mm

Column distance:3200mm

Installation width:3925mm

Lift time:70S

Down time:50S

Motor rate:3.0kw

Weight:990kg

Voltage:110V/220V/380V/415V,as requirements.

Parking Lift

1. 5.5T 4 Post Car Lift with Attaching Beam

- Harga Jual: **Rp 67,000,000**



Model: SP-IF5500

Lifting weight:5500kg

Lifting height:1750mm

Minimum height:220mm

Overall length:7260mm

Overall width:3350mm

Power voltage:380V/415V Runway
plate wide :600mm Width between
runway:1000mm Post height
:2000mm

Lifting time/ Falling time: 60s/50s

Motor power:3.0kw

Scissor Lift

1. 3.5T in-ground scissor lift with extend platform

- Harga Jual: Rp 57,000,000



Model: SP-K3500

Load capacity: 3500kg

Net lift height: 1700mm

Minimum height: 330mm

Platform width: 550mm

Platform space: 820mm

Platform length: 1540+300mm

Motor rate: 3.0kw

Weight: 760kg

2. 3T super-thin full rise scissor lift

- Harga Jual: Rp 68,000,000



Model: SP-CB3000

1. Lifting capacity: 3000Kg

2. Lifting Height: 1850mm

3. Platform Length: 1540mm-2120mm

4. Total width: 2080mm

5. Min Height: 110mm

6. Single Platform Width: 640mm
7. Space Between Platforms: 800mm

8. Lifting Time: 40s (Adjustable)
9. Lowering Time: 30s (Adjustable)

10. Noise: <70dB

11. Voltage: 110V/220V/380V/415V,
1ph//2ph/3ph

12. Motor power: 3Kw

3. **3T super-thin mid rise scissor lift**

- Harga Jual: **Rp 44,000,000**



Model: SP-CB3000

1. Lifting capacity: 3000Kg
2. Lifting Height: 1850mm
3. Platform Length: 1540mm-2120mm
4. Total width: 2080mm
5. Min Height: 110mm
6. Single Platform Width: 640mm
7. Space Between Platforms: 800mm
8. Lifting Time: 40s (Adjustable)
9. Lowering Time: 30s (Adjustable)
10. Noise: <70dB
11. Voltage: 110V/220V/380V/415V, 1ph//2ph/3ph
12. Motor power: 3Kw

4. **2.7T Portable scissor car lift 1.2m lift**

- Harga Jual: **Rp 34,000,000**



Model: SP606

Load capacity: 2700kgs/6000lbs
Lifting height: 1200mm
Minimum height: 120mm
Motor rate: 2.2kw

Wheel Alignment Lift

1. 3.5T Alignment scissor lift

- Harga Jual: **Rp 108,000,000**



Model name: SP-M3500

1. Lifting capacity: 3500Kg
2. Lifting Height: main scissor 360-1850mm+second lift 450mm (load capacity 2000kg)
3. Platform Length: 4500mm
4. Platform width: 625mm
5. lift time & Down time: 50s
6. Motor rate: 3.0kw
7. Air pressure 0.6-0.8mpa
8. oil pressure: 20mpa

2. 3.5T 4 post car lift for wheel alignment

- Harga Jual: **Rp 72,000,000**



Model: SP-I3500

- Load capacity: 3500kg
- Lifting height: 1700mm
- Minimum height: 160mm
- Overall length: 5550mm
- Overall width: 3250mm
- Columns within wide: 2800mm
- Runway plate wide: 510mm
- Width between runway: 900-1050mm
- Secondary lifting height: 270-540mm
- Post height: 2000mm
- Lifting time: 60s
- Falling time: 50s
- Motor power: 2.2kw
- Weight: 1100kg

3. **4T 4 post car lift for wheel alignment**

- Harga Jual: **Rp 83,000,000**



Model: SP-J4000

Load capacity:4000kg

Lifting height:1700mm

Minimum height:160mm

Overall length:5850mm

Overall width:3400mm

Columns within wide: 900-1200mm

Runway plate wide:510mm

Width between runway: 900-1200mm

Secondary lifting height: 270-540mm

Post height:2200mm

Lifting time:60s

Falling time:50s

Motor power:3.0kw

Weight:1500kg

4. **5.5T 4 post car lift for wheel alignment**

- Harga Jual: **Rp 121,000,000**



Model: SP-J5500

Load capacity:5500kg

Lifting height:1750mm

Minimum height:160mm

Overall length:6000mm

Overall width:3400mm

Columns within wide:1000mm

Runway plate wide:510mm

Width between runway: 900-1200mm

Secondary lifting height: 270-540mm

Post height:2200mm

Lifting time:60s

Falling time:50s

Motor power:3.0kw Weight:2140kg